

Rubber
Flooring
Direct



Safety Is Our Commitment



Rubber
Flooring
Direct

Who are we?

Rubber Flooring Direct (RFD) is a South Australian company, established in 2011 through the success of its sister company TEB Contractors. With over 15 years of experience within the sporting surface industry we have developed a vast knowledge for all surfacing solutions.

Rubber Flooring Direct offers premium quality rubber flooring products to the retail and commercial market Australia-wide, with our stock being stored locally at our warehouse in Modbury North, South Australia. From the first time you contact us the greatest care is taken to provide you with a prompt service and professional solution to your surfacing needs from design, layout, base preparation, surface installation, final site inspection and certification.

At Rubber Flooring Direct, there's a solution for everyone! From rubber pavers, tiles and gym flooring, to rubber mulch, synthetic grass and our wet pour rubber options that provide a flexible, soft and safe flooring solution. If safety from falls is a concern, we have pre-certified safe-fall systems designed to cushion the impact of falls - great for schools, day care centres, playgrounds - in fact anywhere that Australian Standards are required, and even for the additional peace of mind around your home. Test certificates for compliance with Australian 'Playground Standards' (AS/NZS 4422:1996) can be provided upon purchase of a safety flooring solution.

'Our goal is to create a safer Australia with the innovation that is Rubber Flooring'.

Our products are manufactured in Malaysia, the largest producer of rubber in the world, by a company dedicated to becoming the leading manufacturer of recycled rubber in the industry. Rubber waste that is destined for landfill (such as scrap tyres and recyclable rubber) is shredded and processed into small granules where rubber-manufacturing experts mix, mould and transform granules into the final rubber products you see at Rubber Flooring Direct.

Our products provide a safe, slip-resistant flooring solution that is cost effective but looks outstanding. Have us quote on the installation, or you can 'Do It Yourself'. We offer free consultations to find the right solution for your requirements and budget.

Delivery is Australia-wide and pick up is available at our showroom & warehouse. For deliveries around metropolitan Adelaide, we provide a fast and cheap local delivery service.

Should you have any questions at any time regarding our products, please contact us now on

(08) 8395 8198 or enquiries@rubberflooringdirect.com.au

Please visit our site at: <http://www.rubberflooringdirect.com.au>

Kind regards,

The Rubber Flooring Direct Team

Tom Burgess

Director

P: (08) 8395 8198

M: 0419 832 282

Christina Burgess

Office Manager

P: (08) 8395 8198

M: 0427 708 733



500 mm x 500 mm x 45mm

Safety Tiles & Pavers

If you are planning the construction of a new playground or resurfacing an existing area, we have a number of solutions available to you.

All our products are suitable for all installations from commercial to private back gardens, due to our pre-certified product range, you can be assured safety is always number one.

Rubber Flooring Direct, focus it's specialities towards the installation of our Rubber Safety Pavers and Tiles. These are great for the active environment providing sound and shock absorption along with spike and slip resistance. But importantly the tiles and pavers are **pre-certified** for a critical fall height of 1.35m (this means the floor height of your equipment maybe up to 1.35M). Therefore you can be assured that this system will provide long lasting protection from the day it is installed.

Perfect in areas such as children's playgrounds, pool surrounds, and pathways meeting the Australian Standards (AS/NZ 4422:1996) making them ideal for schools, child care facilities and public playgrounds helping not only to reduce or prevent significant injury, but to provide a comfortable flooring solution everyone can enjoy!

They are fast and easy to install over existing surfaces such as; asphalt or concrete pavements or a new base can be constructed by compacting quarry rubble and levelling with sand but can also be used indoors.



Rubber Pavers Pool Surround: Mitcham Girls School



Rubber Tiles: Prince Alfred College

Coloured SBR Granules



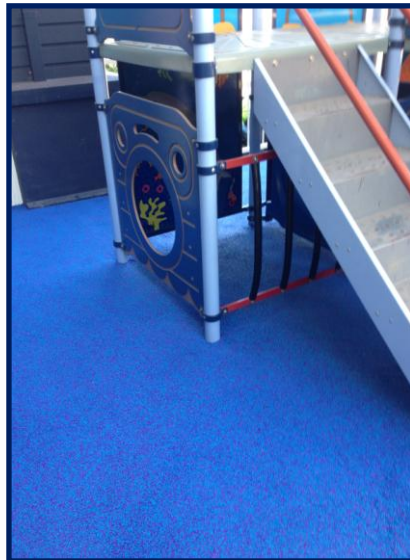
Pre-coloured SBR granules, when mixed with Polyurethane Binder, provide a safe, seamless and soft anti-slip surface that can be used just about anywhere! Whether it is for getting around those difficult areas such as trees, curved paths and around swimming pools, to safety playground surfacing for accident prevention and to ultimately create an innovative play space, the wet pour system has many capabilities and is tailored to suit you.

This system can be installed on most hard surfaces or onto prepared and compacted bases such as quarry rubble. Our minimum recommended depth of installation is 20mm, which can be adjusted to suit any requirements.

There are a number of colour options all of which are made up of a 25% blend of EPDM granules which enhances the vibrancy of the colour and longevity of the surface.

Benefits & Common uses:

- Playgrounds
- Pool Surrounds
- Seamless finish
- Walkways
- Tree Surrounds
- Edging
- Shock absorbent
- Anti-slip
- UV resistance



Coloured SBR granules blue mixed with 25% EPDM purple: Seaford Hotel



Before



After

Pre-Certified Safe-Fall System

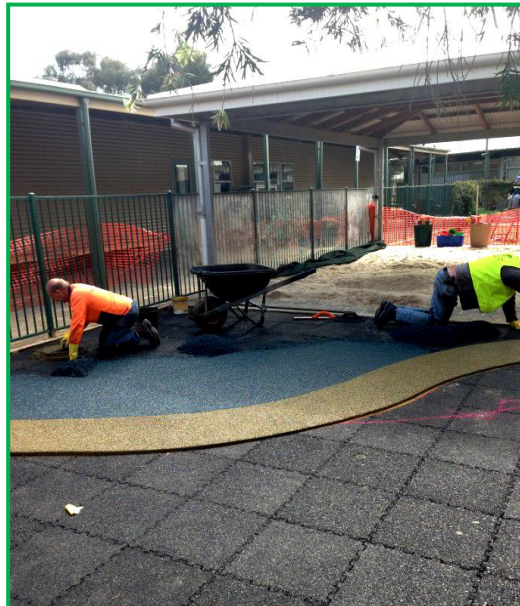


Rubber Flooring Direct are the only company in SA that can provide our clients with a Safe Fall System that is not only designed for a faster easier installation, but to meet Australian standards right 'out-of-the-box'.

This system eliminates the requirement of testing each site for critical fall height (CFH) upon completion. Pre-certified for CFH of 1.45m and 1.8m you can be assured of consistency and safety across the whole play area. This means the floor height of your equipment may be up to 1.45m or 1.8m from the ground.

The system consists of a 25mm or 55mm Underlay tile installed with 20mm of coloured SBR wet pour in any design or colour. With our vast knowledge of base preparation we know that this will provide a far improved surface in the long term as the damage caused by ground movement is significantly reduced because the underlay tiles provide a 'locked in' surface. Therefore common defects such as tearing in the wet pour are notably reduced.

Certification is provided on completion of each project to Australian Standards (AS/NZS 4422:1996).



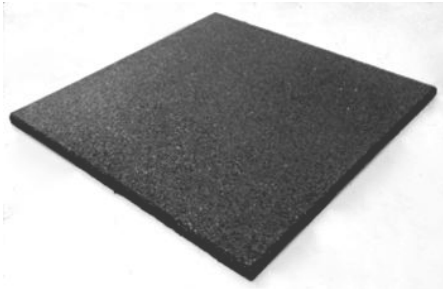
25mm Underlay installation



CSBR installation



Finished Surface with a CFH 1.45M



Commercial Tiles

500 mm x 500 mm x 20mm

Commercial Tiles are our industrial tile, made differently to our standard tiles as the rubber has been further compacted and tightly sealed to produce a much stronger surface. Making them perfect for use under heavy weighted objects or machinery, in workshops, BBQ, entertaining areas, car garage/showrooms.

Due to this inner strength these tiles are our most popular seller for use in the Equine industry. They make an ideal flooring solution for horse floats, stable and wash down areas.

They are great for protecting your floors and if you move, pull them up and take them with you!

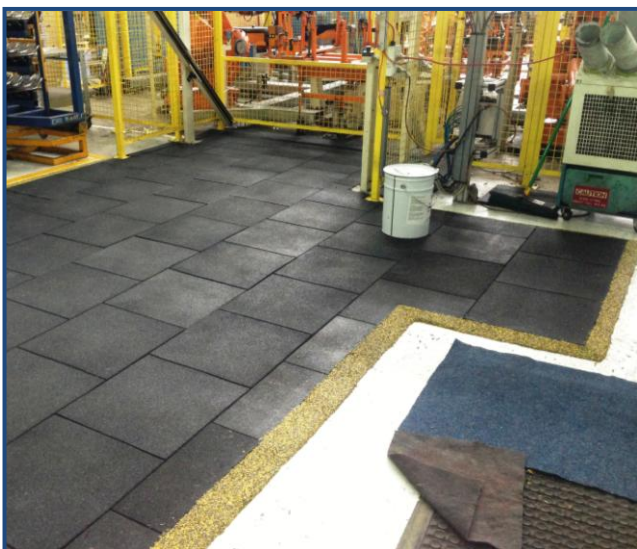


Benefits:

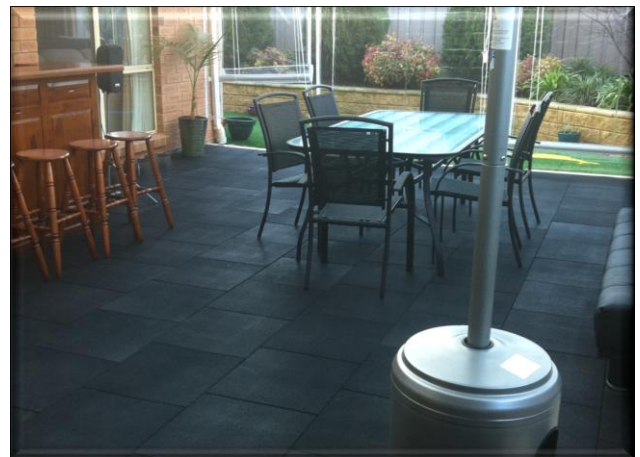
- *Environmentally friendly*
- *Low Maintenance*
- *DIY installations*
- *Shock absorbent*
- *Industrial strength*

Common Uses:

- *Patios*
- *Driveways*
- *Horse walkways, stables, floats*
- *Commercial/factory application*
- *Veterinary*
- *Workshops*



Factory Flooring





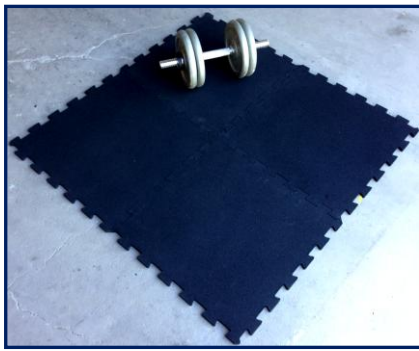
Gym Tiles

1000 mm x 1000 mm x 15 mm

Gym tiles are a high quality rubber tile designed for the commercial gym market and are made with a bevelled edge to prevent tripping hazards, providing that sophisticated look to any room.

Gym tiles are slip-resistant and shock absorbent making them ideal flooring not only for commercial gyms but home gyms and training areas.

They can be 'Do It Yourself' installation and can remain as a portable floor because of their weight (12.5kg) they naturally fit together or the tiles can be fixed down using our outdoor adhesive.



Interlocking Tiles

500 mm x 500 mm x 10 mm

This self-interlocking system provides an easy and cost effective installation, best suited for gym floors or portable flooring. Whether it is a home or commercial gym, PT studio, exercise or yoga classroom, these tiles provide excellent value for money, without affecting the quality of the rubber. Thanks to their interlocking design they make for the perfect portable floor and DIY installation.

Benefits:

- *DIY Installations*
- *Quality*
- *Environmentally friendly*
- *Low maintenance*
- *Portability*
- *Bevelled edge/interlocking*

Common Uses:

- *Gym Floors (commercial/home)*
- *Nursing homes*
- *PT studio*
- *Physiotherapy suites*
- *Camp sites*
- *Showrooms*
- *Martial arts*
- *Equine flooring*
- *Play areas*





Rubber Mulch

The only mulch that is long lasting, easy to install and insect free!



Our mulch is an alternative to the standard wood chip type products used in gardens and playgrounds today. With minimal maintenance and a lifetime of 10 years, rubber mulch will save you time and money, no-need to re-mulch your garden or play area – up to multiple times a year.

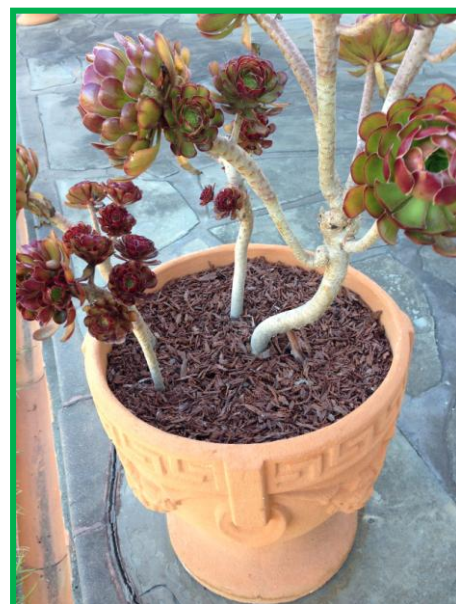
Rubber mulch does not absorb water like wood chips, instead allowing water to pass through to the soil below and helps to retain the moisture, helping garden growth and saving water which in today's climate is extremely important. It will not breed or attract insects such as White Ants and cockroaches, and will not rot, mould or ignite.

In play areas rubber mulch provides, safe flooring with impact protection that is soft underfoot and also removes the risk of splinters.

Rubber Mulch Spread Rates - Per 25kg Bag

Spread Height		Area of coverage (m ²)
20mm	-	4m ²
40mm	-	2m ²
60mm	-	1.33m ²

For example: If you have an area that is 10m² and would like a spread thickness of 20mm then you will require 3 Bags and if you wanted it 40mm thick you will need 5 Bags.

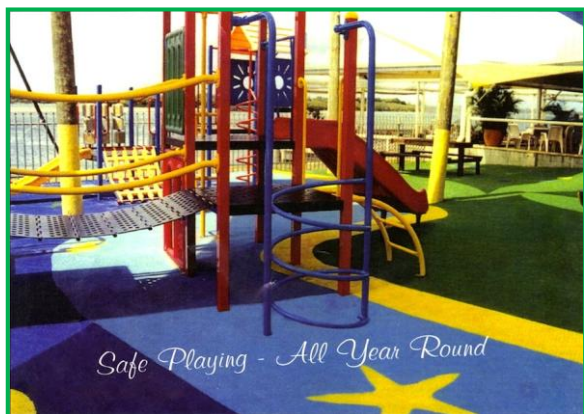




'Softlon Playsafe'

Installing synthetic grass in your play area or garden is a great way to provide a soft, safe flooring solution which is hard wearing and looks great. With an innovative range of coloured grass to enhance design themes and a variety of play shapes available, creating an inspirational play space.

When combined with our 'Softlon Playsafe' system you have a surface that has been extensively tested and complies with AS/NZS 4422:1996 for critical fall height. All certification will be provided on completion of each project. The system consists of a foam underlay mat in various thicknesses providing a range in critical fall height from 1.0m to 2.1m which will suit any equipment requirements. Once the matting is installed a minimum 19mm synthetic grass is laid.



Benefits:

- *Non-slip, environmentally friendly and non-toxic.*
- *Durability, low maintenance*
- *Safety: Pre-certified*
- *Vast areas covered quickly at a reasonable price*
- *Soft surface that is visually attractive*

Play Shapes



Before



After



Installation of 'Softlon Playsafe' System

Landscape

Using Grassman Synthetic grass you can be assured of quality. Australian made from the highest quality raw material components. Synthetic grass feature performance qualities, maximum UV inhibitors, longevity and resilience to harsh environmental conditions.

With water restrictions widespread for garden use, more and more people are seeking the practical and aesthetic qualities that synthetic grass can offer. Also a popular option for schools, playgrounds and council due its ability to withstand the punishment of high traffic areas, natural grass can create dust and mud which can migrate inside.



*Synthetic Grass:
Handball Play Area*

Product Specifications

Description: **SBR safety recycled Rubber Safety Paver/Tile**

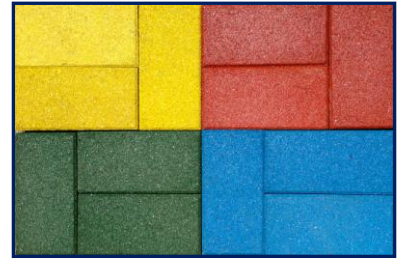
Materials: SBR pigmented shredded rubber with rubber granules

Thickness (mm): 45

Weight (kg): 0.95 (Paver), 8.2 (Tile)

Colour: Blue, Green, Yellow and Red

Dimension: 220 x 110 mm
500 x 500mm



Paver and Tile Colour Options

Description: **SBR safety recycled rubber granules**

Materials: SBR pigmented shredded rubber

Packaged: 25kg Bags

Colour: Green, Blue, Red, Golden Yellow, Jazz

Spreading Ratio: 1x25kg will cover approx 2m²

Binder Mixing Ratio: 1 Bag per 5 Litres of binder



Coloured SBR colour choices



EPDM Colour blends

NB: Other colours are available on request

Description: **SBR safety recycled Rubber Mulch**

Materials: SBR pigmented shredded rubber

Colour: Blue, Terracotta Red and Brown

Packaged: 25kg Bags



Product Specifications

Description: **SBR safety recycled rubber Gym tile**

Materials: SBR pigmented shredded rubber with rubber granules

Thickness (mm): 15

Weight (kg): 12.5

Colour: Black

Dimension: 1000 mm x 1000 mm, Bevelled Edge



Description: **SBR safety recycled rubber Interlocking Tile**

Materials: SBR pigmented shredded rubber with rubber granules

Thickness (mm): 10

Weight (kg): 2.3

Colour: Black with 10% EPDM Speckle

Dimension: 500 x 500mm, V Interlock



Description: **SBR safety recycled rubber Commercial Tile**

Materials: SBR pigmented shredded rubber with rubber granules

Thickness (mm): 20

Weight (kg): 5

Colour: Black

Dimension: 500 x 500mm



Delivery and Special Orders

Rubber Flooring Direct can offer delivery, our warehouse and show room is based in Modbury North, Adelaide and can offer a fast delivery service across South Australia. We welcome all interstate orders and pickups.

RFD has a vast number of products available, with varying designs, shapes and colours available. We are happy to organise a special order if there is a particular product you have in mind. Please speak to our sales representative for further information and advice.



Show room

